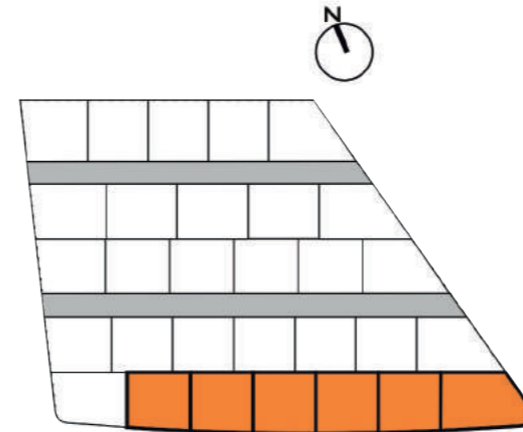




Planta baja (1/75) /
Ground floor (1/75)



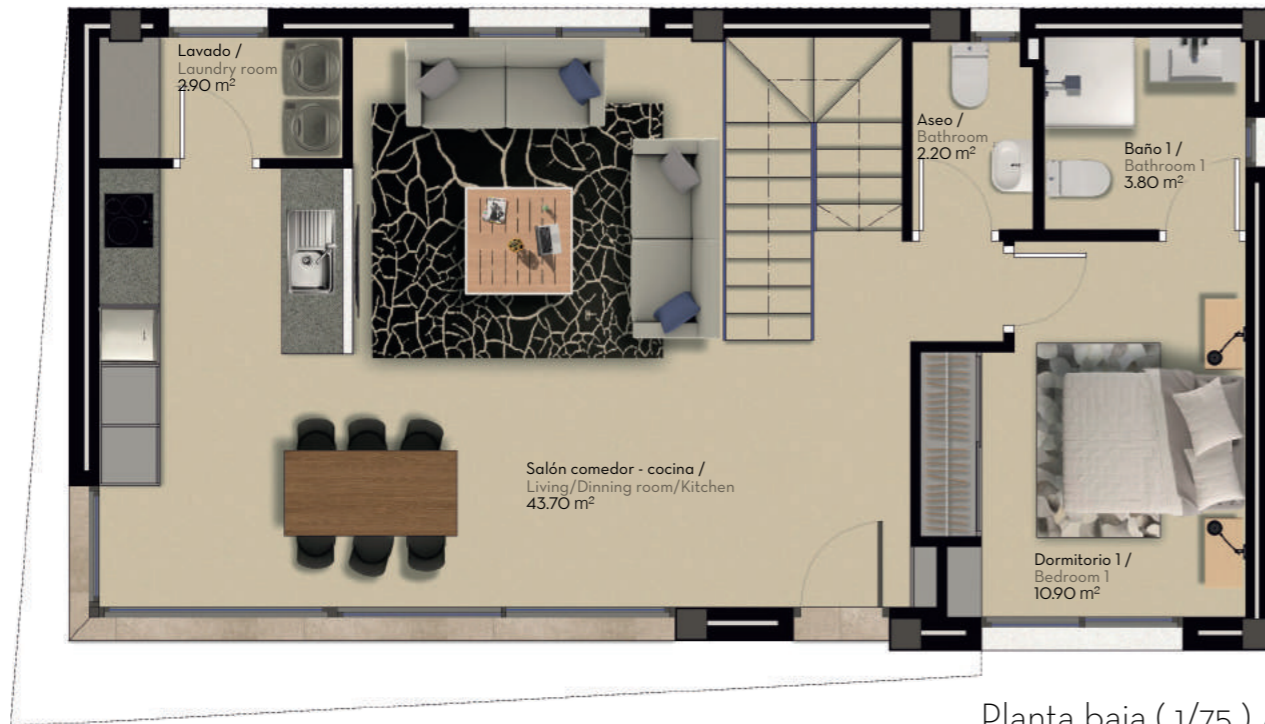
Superficie construida P. Baja - 73,70 m²
 Superficie construida P. Piso - 49,80 m²
 Superficie construida Total - 123,50 m²
 Constructed area "Ground floor" - 73,70 m²
 Constructed area "First floor" - 49,80 m²
 Total constructed area - 123,50 m²



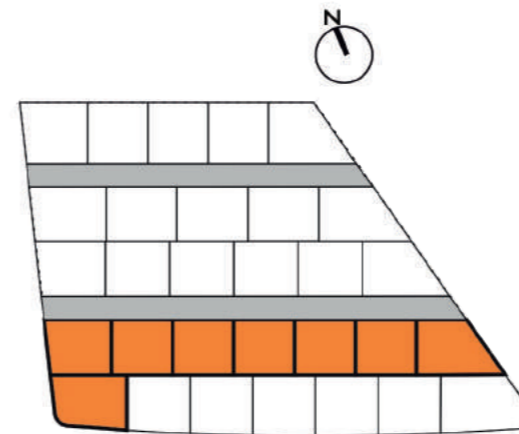
Planta piso (1/75) /
First floor (1/75)



Solarium (1/75) /
Solarium (1/75)



Planta baja (1/75) /
Ground floor (1/75)



Superficie construida P. Baja - 73,70 m²

Superficie construida P. Piso - 49,80 m²

Superficie construida Total - 123,50 m²

Constructed area "Ground floor" - 73,70 m²

Constructed area "First floor" - 49,80 m²

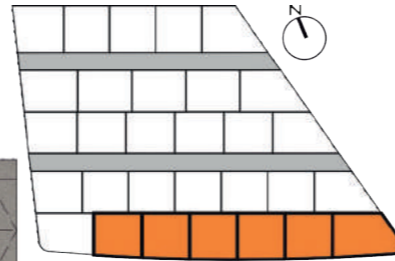
Total constructed area - 123,50 m²



Planta piso (1/75) /
First floor (1/75)

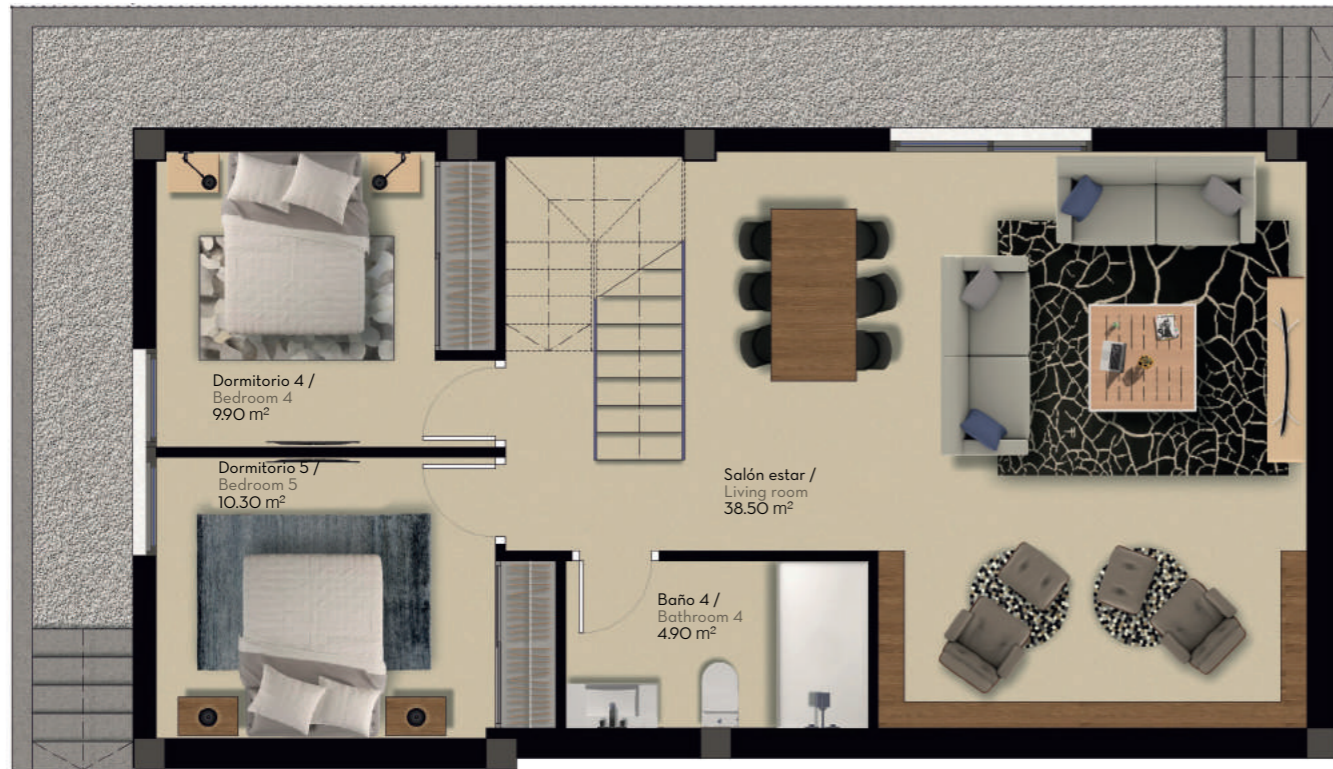


Solarium (1/75) /
Solarium (1/75)



Superficie construida Sótano - 75,30 m²
 Superficie construida P. Baja - 73,70 m²
 Superficie construida P. Piso - 49,80 m²
 Superficie construida Total - 198,80 m²

Constructed area "Basement" - 75,30 m²
 Constructed area "Ground floor" - 73,70 m²
 Constructed area "First floor" - 49,80 m²
 Total constructed area - 198,80 m²



Sótano (1/75) /
Basement (1/75)



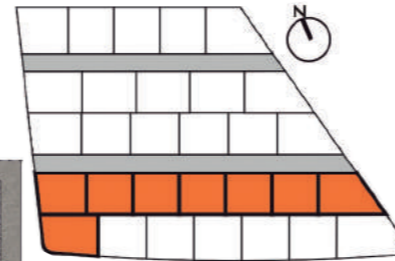
Planta baja (1/75) /
Ground floor (1/75)



Planta piso (1/75) /
First floor (1/75)

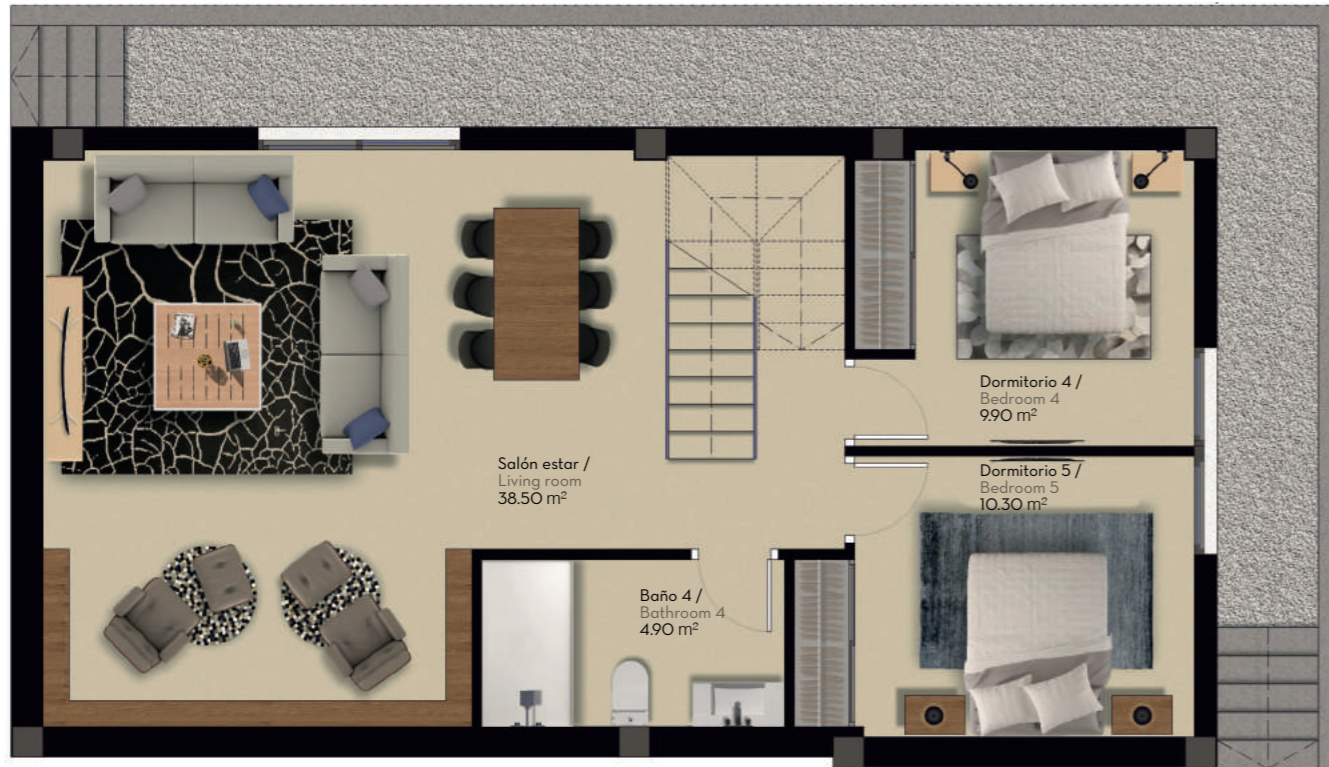


Solarium (1/75) /
Solarium (1/75)

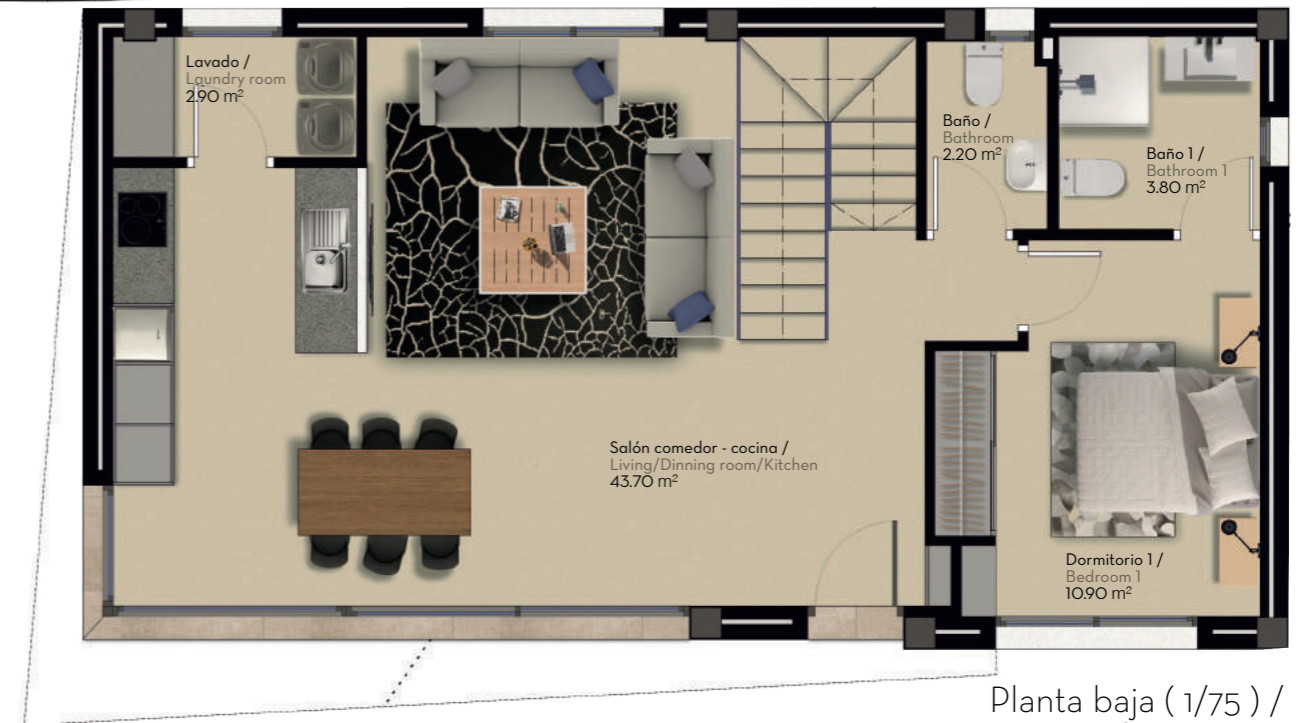


Superficie construida Sótano - 75,30 m²
Superficie construida P. Baja - 73,70 m²
Superficie construida P. Piso - 49,80 m²
Superficie construida Total - 198,80 m²

Constructed area "Basement" - 75,30 m²
Constructed area "Ground floor" - 73,70 m²
Constructed area "First floor" - 49,80 m²
Total constructed area - 198,80 m²



Sótano (1/75) /
Basement (1/75)



Planta baja (1/75) /
Ground floor (1/75)



Planta piso (1/75) /
First floor (1/75)

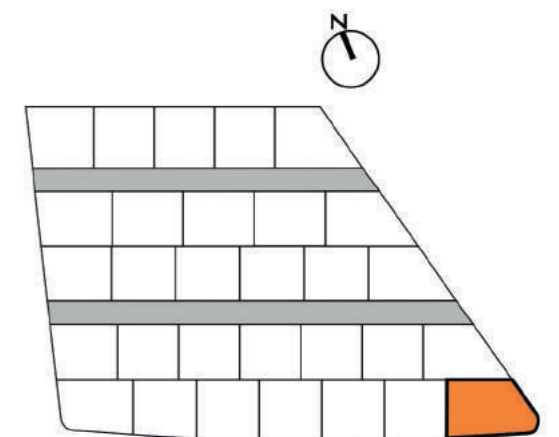


Solarium (1/75) /
Solarium (1/75)



Superficie construida Sótano - 75,30 m²
 Superficie construida P. Baja - 73,70 m²
 Superficie construida P. Piso - 49,80 m²
 Superficie construida Total - 198,80 m²

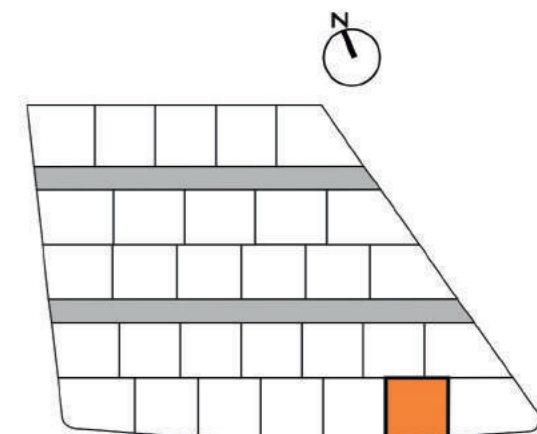
Constructed area "Basement" - 75,30 m²
 Constructed area "Ground floor" - 73,70 m²
 Constructed area "First floor" - 49,80 m²
 Total constructed area - 198,80 m²





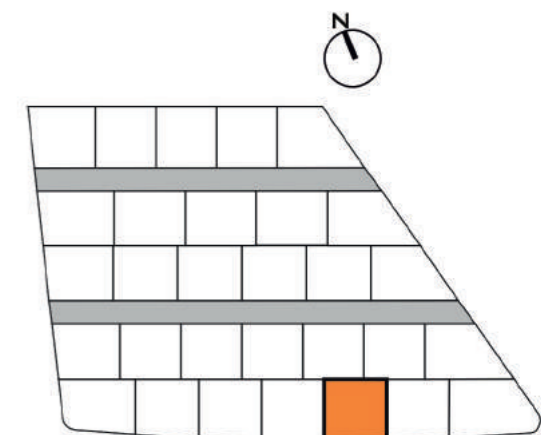
Superficie construida P. Baja - 73,70 m²
 Superficie construida P. Piso - 49,80 m²
 Superficie construida Total - 123,50 m²
 Constructed area "Ground floor" - 73,70 m²
 Constructed area "First floor" - 49,80 m²
 Total constructed area - 123,50 m²

Parcela 2 (1/75) /
 Plot 2 (1/75)



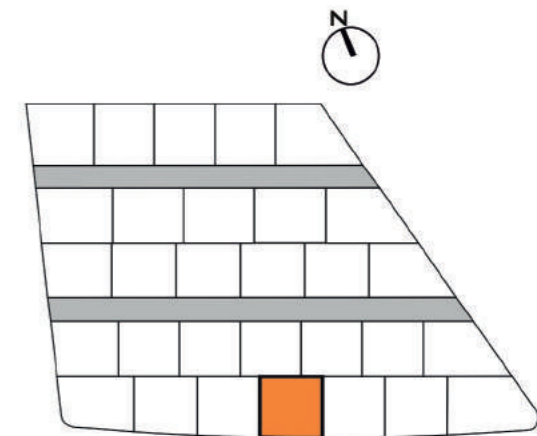


Superficie construida P. Baja - 73,70 m²
 Superficie construida P. Piso - 49,80 m²
 Superficie construida Total - 123,50 m²
 Constructed area "Ground floor" - 73,70 m²
 Constructed area "First floor" - 49,80 m²
 Total constructed area - 123,50 m²





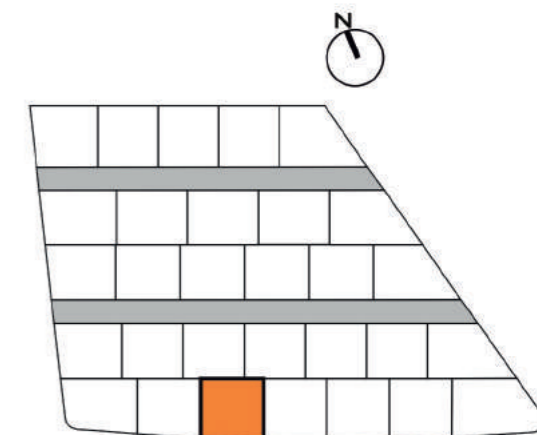
Superficie construida P. Baja - 73,70 m²
 Superficie construida P. Piso - 49,80 m²
 Superficie construida Total - 123,50 m²
 Constructed area "Ground floor" - 73,70 m²
 Constructed area "First floor" - 49,80 m²
 Total constructed area - 123,50 m²





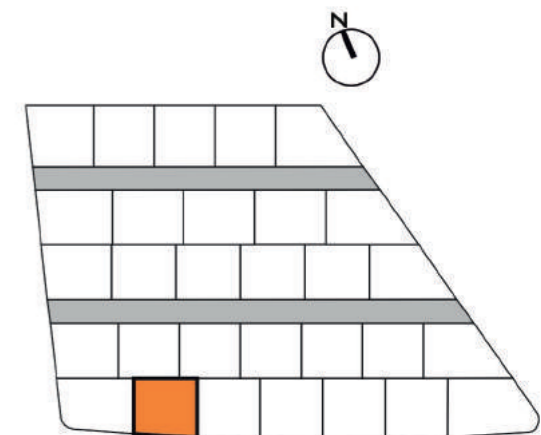
Parcela 5 (1/75) /
 Plot 5 (1/75)

Superficie construida P. Baja - 73,70 m²
 Superficie construida P. Piso - 49,80 m²
 Superficie construida Total - 123,50 m²
 Constructed area "Ground floor" - 73,70 m²
 Constructed area "First floor" - 49,80 m²
 Total constructed area - 123,50 m²





Superficie construida P. Baja - 73,70 m²
 Superficie construida P. Piso - 49,80 m²
 Superficie construida Total - 123,50 m²
 Constructed area "Ground floor" - 73,70 m²
 Constructed area "First floor" - 49,80 m²
 Total constructed area - 123,50 m²

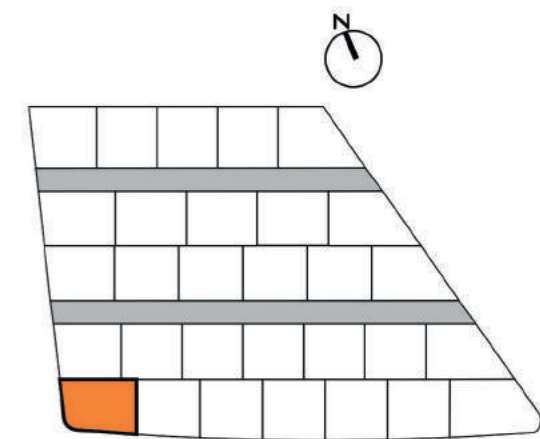




Superficie construida P. Baja - 73,70 m²
 Superficie construida P. Piso - 49,80 m²
 Superficie construida Total - 123,50 m²

Constructed area "Ground floor" - 73,70 m²
 Constructed area "First floor" - 49,80 m²
 Total constructed area - 123,50 m²

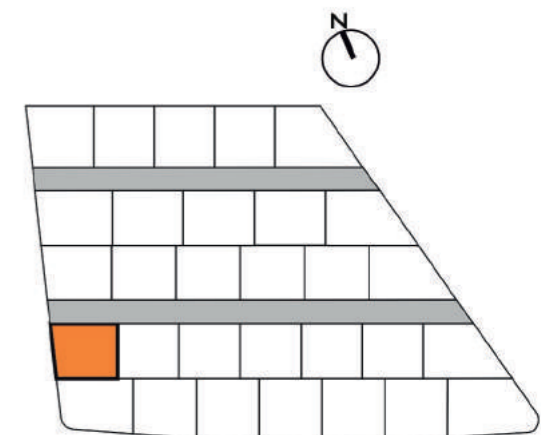
Parcela 7 (1/75) /
 Plot 7 (1/75)





Superficie construida P. Baja - 73,70 m²
 Superficie construida P. Piso - 49,80 m²
 Superficie construida Total - 123,50 m²
 Constructed area "Ground floor" - 73,70 m²
 Constructed area "First floor" - 49,80 m²
 Total constructed area - 123,50 m²

Parcela 8 (1/75) /
Plot 8 (1/75)





Superficie construida P. Baja - 73,70 m²

Superficie construida P. Piso - 49,80 m²

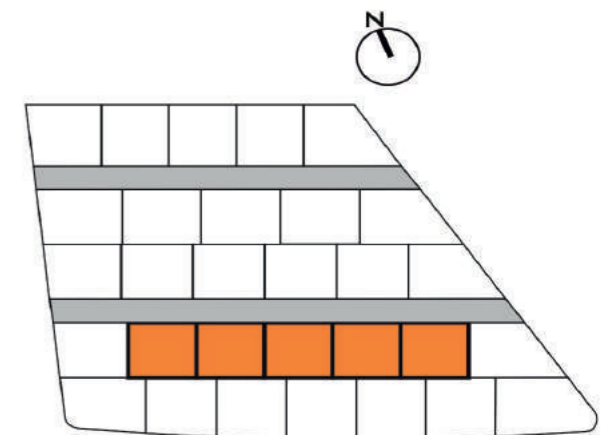
Superficie construida Total - 123,50 m²

Constructed area "Ground floor" - 73,70 m²

Constructed area "First floor" - 49,80 m²

Total constructed area - 123,50 m²

Parcela tipo (1/75) /
Plot type (1/75)



Parcela 14

Superficie: 270,10 m²

Plot 14

Surface: 270,10 m²

30 Viviendas - Algorfa

30 Homes - Algorfa

medvilla



Superficie construida P. Baja - 73,70 m²

Superficie construida P. Piso - 49,80 m²

Superficie construida Total - 123,50 m²

Constructed area "Ground floor" - 73,70 m²

Constructed area "First floor" - 49,80 m²

Total constructed area - 123,50 m²

Parcela 14 (1/75) /
 Plot 14 (1/75)

